



# Smithsonian *Young Benefactors*

May 2009

Not a Member?\_

[Join Today](#)

Connect with us!



Become a fan on Facebook

[Smithsonian Young Benefactors  
Resident Associates Program](#)

## IN THIS ISSUE

### [VOICES TO ACCESS VOLUNTEER PROJECT](#)

[SECOND SATURDAY TOUR](#)  
–HIRSHHORN MUSEUM and  
SCULPTURE GARDEN

[NEW MEMBER DINNER](#) –  
MELTING POT

### [SMITHSONIAN SPOTLIGHT](#)

[RECOMMENDED  
RESIDENT ASSOCIATE  
EVENTS](#)

## CONTACT US

Dear %%FIRST\_NAME%% %%LAST\_NAME%%,

With Spring in full swing, be prepared to hit the dance floor at the [19th Annual Young Benefactors Gala & Silent Auction](#), on Saturday, May 16th, 2009 at the Kogod Courtyard. We are grateful for the generous support from honorary patron, Michael Saylor, CEO of MicroStrategy, and event sponsors Capital File, Heineken, and Ravenswood Winery. This year's honorary guests Luke Russert, NBC News correspondent-at-large, and Pamela Lynne Sorensen of Pamela's Punch, will also be in attendance and offering their support. Come join us for a fun evening filled with live music provided by Raggs & The All Stars, dancing, festive cocktails and hors d'oeuvres, as well as a fantastic a silent auction! Items include executive suite Washington Capitals tickets, sailing lessons at the Washington Sailing Marina, a ruby-and-diamond pendant from Adeler Jewelers and many more items. There is something for everyone! The Gala is quickly approaching, so I hope you have purchased your tickets. Event proceeds benefit the YB Culture4Kids Fund, which provides support for local schoolchildren to attend the educational and cultural programs presented by The Smithsonian Associates.

The Young Benefactors are always seeking volunteers. If you would like to receive volunteer notices via email, please send us an email at [yb@si.edu](mailto:yb@si.edu) and include "Seeking Volunteer Opportunities" in the subject line. In addition, the YBs are currently seeking links to help facilitate our Link Program. We are seeking links for both the YB New Member Dinners and Second Saturday Tours, who will be responsible for attending these programs and serving as a liaison for those in attendance by inviting them to join you at YB Happy Hours and events. The Link Program is designed to not only introduce members to one another, but also to assist the Smithsonian and communicate the aims of the Young Benefactors program. To become a Link and support the Young Benefactors, please email Brian Chu at [brilchu@aol.com](mailto:brilchu@aol.com). For additional volunteer opportunities, please visit the "Get Involved" page of the YB Website.

Please note we have postponed a May Happy Hour and will resume the monthly schedule in June.

We look forward to seeing you and your friends May 16th at the 19th Annual Smithsonian Young Benefactors Gala & Silent Auction! For tickets or information, visit [www.YoungBenefactors.org](http://www.YoungBenefactors.org).

Sincerely,



Katharine Reishman

## *Voices to Access Volunteer Project*

Katharine Reishman,  
Director  
Phone: 202-633-8604  
Email: [ReishmanK@si.edu](mailto:ReishmanK@si.edu)

Kate Stilwill,  
YB Coordinator  
Phone: 202-633-8663  
Email: [StilwillK@si.edu](mailto:StilwillK@si.edu)

Ticketing Box Office  
Phone: 202-633-3030

**Saturday, May 16, 10:15 a.m. to 1 p.m.**

**Location:** [National Museum of American History](#)

14th Street & Constitution Avenue, NW, Washington, DC

**Metro:** Federal Triangle or Smithsonian Metro (Blue and Orange lines)

The Voices to Access Project provides cassette recordings of the *Smithsonian* magazine and other printed materials to more than 800 people monthly who are visually impaired. YB members volunteer in the packaging and mailing process, allowing the Smithsonian to offer the recordings free to those who need it. It is a wonderful way to give back to the Smithsonian while meeting other YB members in a small group setting. The group may go to lunch afterwards.

Since the American History Museum has now re-opened, you may now enter the museum through the main Entrance. If you arrive before the Museum opens, please check in through the Staff Entrance in the parking tunnel. The Voices to Access Project takes place in the Accessibility Office (Room 2100A) on the second floor. The office is situated near the end of *Communities in a Changing Nation* exhibition.

For information or to sign up, e-mail [voicestoaccess@yahoo.com](mailto:voicestoaccess@yahoo.com).

### 2009 ANNUAL SPONSORS



---

## *YB Second Saturday Tour*

**Saturday, May 9, 12 noon**

**Location:** [Hirshhorn Museum and Sculpture Garden](#)

National Mall at Independence Avenue at Seventh Street SW

**Metro:** Smithsonian (Blue and Orange lines) and L'Enfant Plaza  
(Blue, Orange, Yellow, and Green lines)

**FREE for Members Only**

### [Louise Bourgeois and Strange Bodies](#)

The Hirshhorn Museum has partnered with the Tate Modern, London and Centre Pompidou, Paris to host a major survey of Louise Bourgeois works. French-born and emigrated to the United States, Bourgeois' avant-garde style was inspired by a curious mix of European and American style including: Surrealism, psychoanalysis, feminism and primitivism. Uniquely personal, yet stirring her work confronts the viewer to an emotional response.

Strange Bodies shows the fascination of human representation during the first half of the twentieth century featuring works by Willem de Kooning, Francis Bacon, Alberto Giacometti and many other art luminaries.

Space is limited! Email [ybsecsat@yahoo.com](mailto:ybsecsat@yahoo.com) by May 3rd to reserve your space. **Reservations will be taken by email at this address only and are required to attend.** The Smithsonian Young Benefactor's will be planning on going to

lunch following the event. Lunch will be on your own. All are invited to attend.

Please provide the following information in your email:

- “May Tour Reservation Request” in the subject line
- Your name and your YB Member ID

---

## ***YB New Member Dinner***

**Monday, May 4th, 6:45 to 9 p.m.**

**Location:** [The Melting Pot](#)

1220 19th Street, NW, Washington, DC

**Metro:** Dupont Circle (Red Line)

**Calling All New Members!**



The Young Benefactors Leadership Committee invites you to attend our New Member Dinners now at The Melting Pot. These dinners provide a perfect opportunity to meet other new Young Benefactors as well as current members and chairs of our committees. There is no charge to attend the dinner; however, attendees are responsible for their food and drink costs along with any applicable gratuities.

At The Melting Pot, the YBs will enjoy a prix fixe menu of a salad and two fondue courses for \$20 (plus tax and gratuity), wine specials, and use of a private room.

Reservation Policy: New Member dinners are designed to provide new members with an opportunity to meet each other and learn about the organization in a small group setting (15 to 30 people per dinner). Therefore, we require that all interested attendees RSVP. Seats for each dinner will be filled on a first-come, first-served basis. If the available seats have been filled for the dinner you request, your name will be placed on a waitlist, and you will be confirmed for a seat at a future dinner.

To RSVP: Send an email to [ybnewmembers@yahoo.com](mailto:ybnewmembers@yahoo.com) with the following information: “New Member Dinner” (Subject Line), your name, email, phone, date of dinner you would like to attend, month/year you joined, and your YB member ID.

---

## ***Smithsonian Spotlight***

Openings, Events, and Exhibitions of Interest



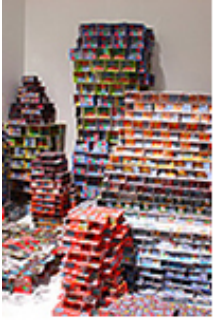
**[“Universal Dimensions: The Space Art of Wang Ming” at the National Air and Space Museum](#)**

**April 9, 2009 - October 9, 2009**

This exhibition explores the art of Chinese painter Wang Ming through 35 works that are part of the artist’s personal collection. Since leaving China in 1951, Wang Ming, a former air traffic controller and art framer, has strived to make art that builds a bridge of understanding between people of all nationalities and cultures. Like the abstract expressionists, Ming explored the use of untraditional materials, such as acrylic paints and Pellon (fabric interfacing) in his art, and he exhibited with such Washington Color School luminaries as Kenneth Noland and Gene Davis in the

1960s, but his work is rooted in traditional Chinese forms and calligraphy. *Universal Dimensions: The Space Art of Wang Ming* is on view at the Air and Space Museum.

For more information: <http://www.nasm.si.edu/exhibitions/gal104/wangming.cfm>.



### **[“Jean Shin: Common Threads” at the Smithsonian American Art Museum](#)**

**May 1, 2009 - July 26, 2009**

Jean Shin employs a meticulous process of dismantling, altering, and reconstructing discarded and worn materials -- such as old shoes, lost socks, lottery tickets, and broken umbrellas -- to create textural installations that give new form to life's leftovers. Some of her most compelling projects to date incorporate clothing and found objects from friends, relatives, colleagues, and the local community; this collaboration is an integral part of her process. On view are six of her recent “site-responsive” sculptures and installations and one new installation -- *Everyday Monuments*, in which the artist used donated old trophies -- that engage both the Smithsonian and Washington-area communities.

For more information: <http://americanart.si.edu/exhibitions/>.



### **[“African Vision II: The Walt Disney-Tishman African Art Collection” at the National Museum of African Art](#)**

**Upcoming: May 18, 2009 - Indefinitely**

On view are 60 objects and 4 in the lobby from this comprehensive 525-piece collection of African art representing 20 African countries and 75 peoples and covers 5 centuries of African art, including most major styles ranging from a highly abstract Cameroon mask to a naturalistic carved wooden male figure from Madagascar. Many of the works inspired such 20th-century artists as Picasso and Juan Gris.

For more information: <http://africa.si.edu/exhibits/africanvision/>.

For other new and upcoming events at the Smithsonian, [click here](#).

---

## ***Recommended Resident Associate Events***

As a Young Benefactors Member, you receive member discounts to the nearly 1,200 Resident Associate programs offered each year. Visit [ResidentAssociates.org](http://ResidentAssociates.org) or grab a copy of the monthly *Smithsonian Associate* catalog for a complete program listing and ticket information.



### **[Play Ball! The Washington Nationals and the World Champion Philadelphia Phillies at Washington Nationals Park](#)**

Ticket and Baseball Fare Buffet

**Sunday, May 17, 11 a.m. (program); 1:35 p.m. (game time)**

Baseball fans eager to get the lowdown on the Nats from key personnel—both players and management—can join in a behind-the-scenes discussion before the game starts. A buffet of baseball fare follows, and then it's off to your seats in sections 203-204 to watch the Nats play the world champion Philadelphia Phillies at 1:35 p.m.

NEWS FLASH! Stan Kasten, Manny Acta, & Mike Rizzo have confirmed they plan to attend!

The program takes place in the conference center on the mezzanine level. Price includes food, beverages, and game ticket in left-field mezzanine.

Game ticket will be mailed approximately two weeks before game day. The ticket must be brought to the stadium for admittance.

[+ BUY TICKETS](#)



### [Pairing Food with Cocktails \(With Tastings\)](#)

**Tuesday, May 19, 6:45 to 8:45 p.m.**

Pairing cocktails with food is an art. With so many distinctive flavors in mixed drinks, it is difficult to know the right fare to complement the subtle tastes. However, it can be done. Two area cocktail experts, **Derek Brown** and **Todd Thrasher**, demonstrate the creative possibilities of cocktails. Learn, for example, why asparagus tastes earthier when paired with a dry martini or what cocktail is best served when chocolate is on the menu. Participants taste food and cocktails together and learn basic principles of mixology along the way.

Brown is the head bartender at The Gibson and a cocktail instructor at CulinAerie. Thrasher is a bartender and partner at Restaurant Eve, The Majestic, and PX.

[+ BUY TICKETS](#)



### [Travel Inexpensively Without Being Cheap](#)

**Thursday, May 21, 6:45 to 9 p.m.**

Where would you rather stay: in a medieval castle overlooking town or a bland hotel room? The 15th-century hunting lodge-turned-eco farm of a marquis or a chain hotel? Would you rather take gondola poling lessons or a quick gondola ride in Venice? In this evening seminar, guidebook author **Reid Bramblett** shares tips, tricks, and insider secrets that can turn an ordinary vacation into the trip of a lifetime—without increasing the cost.

Interspersed among the practical tips, travel-industry trends, and recommended resources will be examples of how saving money doesn't have to shortchange your trip; it can help you experience more while spending less. With his advice, for instance, you could skip to the head of the long line at Paris's Musee d'Orsay without buying a ticket or take a free tour of Hong Kong's Victoria Harbour in an authentic Chinese junk.

Bramblett is the author of numerous Frommer's and DK Eyewitness guides and founder of [ReidsGuides.com](#).

[+ BUY TICKETS](#)



### [Genes and Jazz](#)

**Friday, May 29, 7 p.m.**

Nobel laureate **Harold Varmus** and his son, jazz musician **Jacob Varmus**, explore the intersection of science and music in this fascinating program combining aspects of modern biology with modern

music, including improvisation.

Using remarkable images and computer simulations of basic cell processes, Harold Varmus offers a primer on cell biology, evolution, and cancer, as the Jacob Varmus Quintet paces, reflects, and illuminates the science.

Harold Varmus, president of Memorial Sloan-Kettering Cancer Center and former National Institutes of Health director, received the 1989 Nobel Prize in Medicine for cancer research with his colleague J. Michael Bishop.

Jacob Varmus, an emerging trumpeter-composer, is director of the Astoria Music Society jazz series and a recent New York City Department of Cultural Affairs grant recipient. His second album, Terminal Stillness, will soon be released on Crows' Kin Records.

---

[+ BUY TICKETS](#)

In order to purchase tickets online, you will need to login to our website. Only current Young Benefactors members are able to purchase tickets at the member rate for both Young Benefactors and Resident Associate programs/events.

**If you have not yet used your Temporary Login, which is linked to your Smithsonian account, please use the information that appears below:**

%%\$temp\_login%%

%%\$temp\_password%%

---

Please share your thoughts and/or questions. The YB Committees value your input and welcome all volunteers. Contact information and Committee descriptions are available at <http://youngbenefactors.org/ticketing/contact.aspx>.

For more information on the Young Benefactors of the Smithsonian Institution, visit [www.YoungBenefactors.org](http://www.YoungBenefactors.org).

For more information on the Smithsonian Resident Associate Program, visit [www.ResidentAssociates.org](http://www.ResidentAssociates.org).

---

You have received this email because you subscribed to the service or submitted your name and e-mail address.

To unsubscribe, please send a reply e-mail to [CustomerService@ResidentAssociates.org](mailto:CustomerService@ResidentAssociates.org) with "Unsubscribe to YB" in the subject line. [Click here](#) to change your subscription preferences by logging in.