

Smithsonian *Young Benefactors*

Have trouble viewing this e-mail? [Click here.](#)

December 2008

Not a Member?_

[Join Today](#)

IN THIS ISSUE

[VOICES TO ACCESS
VOLUNTEERPROJECT](#)

[SECOND SATURDAY TOUR –
SECOND SATURDAY TOUR –
FREER GALLERY OF ART](#)

[NEW MEMBER DINNER – THE
MELTING POT](#)

[HAPPY HOUR](#)

[JOLLY HOLIDAY – THE
SMITHSONIAN CASTLE](#)

[SMITHSONIAN SPOTLIGHT](#)

[RECOMMENDED RESIDENT
ASSOCIATE EVENTS](#)

CONTACT US

Dear %%FIRST_NAME%% %%LAST_NAME%%,

December is upon us and winter has officially arrived!

2008 was a very exciting year for the Young Benefactors. We visited a multitude of Smithsonian museums through Second Saturday Tours; attended a U2 concert through the U23D IMAX Film at National Museum of Natural History in March; enjoyed a festive YB Polo Kick-Off Reception at the Embassy of Argentina in June; then in July we celebrated our 19th year at the Annual Birthday Bash. In August, we visited Utopia – A Picture Story for a Happy Hour at the Embassy of Australia and experienced Indigenous Australian batiks made by women from the Utopia Region. In September, we hosted a successful 2nd Annual Smithsonian Young Benefactors Cup to raise funds for the YB Culture4Kids Fund.

This weekend, on Saturday, December 6th, we look forward to the 19th Annual Jolly Holiday event to celebrate the holiday season and salute the close of the year in Smithsonian style at The Smithsonian Castle. I hope you will be able to join us!

As the year comes to a close, I want to thank each of you for your continued support and enthusiasm for the Young Benefactors throughout the year and at the same time, welcome our new members.

Thank you! – We greatly appreciate your participation and membership and look forward to another successful and exciting year in 2009! I invite you to make a year end gift to the Young Benefactors and assist us in our fundraising goals. To make a donation, please visit <http://youngbenefactors.org/ticketing/support/index.aspx>.

Happy Holidays!



Katharine Reishman

Encourage your friends to join! Please forward this newsletter and bring a friend to our monthly Happy Hour events. For membership or event information, go to www.YoungBenefactors.org or email yb@si.edu.

Voices to Access Volunteer Project

Saturday, December 20, 10:15 a.m. to 1 p.m.

Katharine Reishman,
Director
Phone: 202-633-8604
Email: ReishmanK@si.edu

Ticketing Box Office
Phone: 202-633-3030

2008 ANNUAL
SPONSORS


ridgewells

Location: [National Museum of American History](#)
14th Street & Constitution Avenue, NW, Washington, DC
Metro: Federal Triangle or Smithsonian Metro (Blue and Orange lines)

The Voices to Access Project provides cassette recordings of the *Smithsonian* magazine and other printed materials to more than 800 people monthly who are visually impaired. YB members volunteer in the packaging and mailing process, allowing the Smithsonian to offer the recordings free to those who need it. It is a wonderful way to give back to the Smithsonian while meeting other YB members in a small group setting. The group may go to lunch afterwards.

Since the museum is now closed for renovation until fall 2008, you will receive instructions on how to enter the museum upon signing up. The Voices to Access Project takes place in the Accessibility Office (Room 2100A) on the second floor. The office is situated near the end of the *Communities in a Changing Nation* exhibition.

For information or to sign up, e-mail voicestoaccess@yahoo.com.

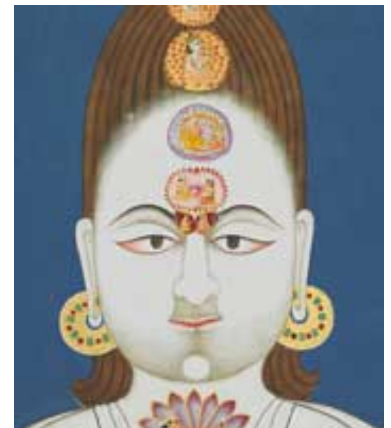
YB Second Saturday Tour

Saturday, December 13, 12 noon

Location: [Freer Gallery of Art](#)
Jefferson Drive at 12th Street, SW
Metro: Smithsonian (Blue and Orange Lines)

FREE for Members Only

[“Garden and Cosmos: The Royal Paintings of Jodhpur”](#)



This groundbreaking exhibition of newly discovered Indian paintings from the royal court collection of Marwar-Jodhpur (in the modern state of Rajasthan) has three sections devoted to the garden and cosmos leitmotifs, with an introductory gallery about the kingdom of Marwar-Jodhpur and the origins of its court painting traditions in the 17th century. Produced for the enjoyment of the Marwar-Jodhpur maharajas, virtually none of the 60 works on view in “Garden and Cosmos” have ever been published or seen by scholars since their creation centuries ago. Strikingly innovative in their large scale, subject matter, and styles, they reveal both the conceptual sophistication of the royal atelier and the kingdom’s engagement with the changing political landscapes of early modern India.

Space is limited! Email ybsecsat@yahoo.com by December 5th to reserve your space. Reservations will be taken by email at this address only and are required to attend. The Smithsonian Young Benefactors are planning to go to lunch following the event. Attendees will be responsible for their own lunch and any applicable gratuities. All are invited to attend.

Please provide the following information in your email:

- “December Tour Reservation Request” in the subject line
- Your name and your YB Member ID

YB New Member Dinner

Monday, December 8, 6:45 to 9 p.m.

NEW Location: [The Melting Pot](#)

1220 19th Street, NW, Washington, DC

Metro: Dupont Circle (Red Line)



Calling All New Members!

The Young Benefactors Leadership Committee invites you to attend our New Member Dinners now at The Melting Pot. These dinners provide a perfect opportunity to meet other new Young Benefactors as well as current members and chairs of our committees. There is no charge to attend the dinner; however, attendees are responsible for their food and drink costs along with any applicable gratuities.

At The Melting Pot, the YBs will enjoy a prix fixe menu of a salad and two fondue courses for \$20 (plus tax and gratuity), wine specials, and use of a private room.

Reservation Policy: New Member dinners are designed to provide new members with an opportunity to meet each other and learn about the organization in a small group setting (15 to 30 people per dinner). Therefore, we require that all interested attendees RSVP. Seats for each dinner will be filled on a first-come, first-served basis. If the available seats have been filled for the dinner you request, your name will be placed on a waitlist, and you will be confirmed for a seat at a future dinner.

To RSVP: Send an email to ybnewmembers@yahoo.com with the following information: “New Member Dinner” (Subject Line), your name, email, phone, date of dinner you would like to attend, month/year you joined, and your YB member ID.

YB Happy Hour

Due to the countless holiday festivities this time of year we are consolidating our holiday events into Jolly Holiday! Come join the Young Benefactors Saturday, December 6th at the 19th Annual Jolly Holiday. For event and ticket information, [click here](#).

We will resume our monthly Happy Hours in January. See you in 2009!



Jolly Holiday

Saturday, December 6, 8 p.m. – Midnight



Location: Smithsonian Castle
1000 Jefferson Drive, SW Washington, DC
Metro: Smithsonian (Orange and Blue Line)

Jolly Holiday is coming up this weekend and tickets are selling quickly! This fun and festive annual event is a great way to kick off the holiday season with friends and celebrate the season. Guests will enjoy hors d'oeuvres, savory sweets, open bar, dancing, a visit from Santa and more! The YBs are collecting non-perishable food items to help support a local charity. With the current economic climate, many food banks are challenged to supply those they serve—we are hoping to provide holiday meals for those individuals and families this holiday season.

We are delighted to have Event Sponsors – Emperor's Brand Vodka, Fiji Water and Heineken, as well as, our Mystery Box Sponsors including: CityShopGirl.com, Hela Spa, D.C. United, LaVina Designs Boutique, Pangea Organics, Vida Fitness, Vineyard Vines, Washington Capitals, and the Washington Redskins. Join us and see what sort of surprises our sponsors have in store for you!

Purchase your tickets for Jolly Holiday now at www.youngbenefactors.org.

YB Spotlight

Openings, Events, and Exhibitions of Interest

As 2008 draws to a close, many featured and traveling exhibitions around the Smithsonian are closing as well. The following exhibitions are just a few that we think would be great to take advantage of before they are gone for good!

[Smithsonian African Art Museum - Fashioning Identity](#)

African textiles, garments and accessories have long served as communicative genres and expressions of identity. Textiles are powerful communicators of status, gender, and accomplishments. Featured in this exhibition, which will close on December 28, are never before or rarely seen African costumes and textiles – from ensembles to wrappers to wall hangings to chain mail and accessories and hats – drawn from the National Museum of African Art's collection. For more information, [click here](#).

[Smithsonian American Art Museum - Georgia O'Keeffe and Ansel Adams: Natural Affinities](#)

This exhibition features 42 paintings by Georgia O'Keeffe (1887-1986) and 54 photographs by Ansel Adams (1902-1984) that reveal their deep commitment to the American landscape. The exhibition, the first to pair these artists, explores how they intensely focused their attention on beauty in nature and transformed these elements with color and tone. This exhibit will close on January 4. For more information, [click here](#).

[Smithsonian Hirshhorn Museum - Blackbox: Semiconductor](#)

The Black Box Theater showcases rotating exhibitions of contemporary artists who use film or video as their creative medium. This exhibition has been on display at the Hirshhorn since August and will close on December 14. UK-based artists Ruth Jarman and Joseph Gerhardt, aka Semiconductor, have collaborated since 1997 on various forms of "digital noise and computer anarchy," including films, experimental DVDs and multi-media performances. The film short featured is Magnetic Movie (2007, 4.47 min.), an eye-dazzling "documentary" created during the artists' residency at the NASA Space Sciences Laboratories, UC Berkeley. Films or videos run continuously. For more information, [click here](#).

Recommended Resident Associate Events

As a Young Benefactors Member, you receive member discounts to the nearly 1,200 Resident Associate programs offered each year. Visit ResidentAssociates.org or grab a copy of the monthly *Smithsonian Associate* catalog for a complete program listing and ticket information.

[The Spirit of Angels at the Washington National Cathedral](#)

Tuesday, December 2, 10:30 a.m.–noon OR
Saturday, December 6, 10:30 a.m.–noon



Take a special holiday tour at the Washington National Cathedral in exploration of Angels. A theme of “wings do not an angel make” is discussed in the evolution of angels’ forms as seen through art and artisanship. The focus on angels is supplemented with a look at some of the cathedral’s exceptional stained glass windows. The group may also view the exhibition “Dreamers and Believers: Cathedral Builders,” which uses stories, voices, images, and film to celebrate the people who built the cathedral.

[+ BUY TICKETS](#)

[The Front Page of the *New York Times*: An Insider’s Look](#)

Tuesday, December 9, 7 p.m.



See for yourself, how one of the most highly acclaimed newspapers in America deals with everyday issues. According to Bill Keller, executive editor of the *New York Times*, “The life of a newspaper revolves to a large, possibly ridiculous, degree around the making of a single page – the front page. For most of this paper’s history, the news workday has been defined by the launching, refining, winnowing, and arranging of those few articles that will represent the editors’ best reckoning of what mattered most yesterday.” Moderated by former *New York Times* reporter Bernard Kalb, the discussion will address past and present front-page issues. Guests include Keller, Helene Cooper, diplomatic correspondent, David Leonhardt, economics columnist, and Washington Bureau Chief Dean Baquet.

[+ BUY TICKETS](#)

[Holiday Splendors at the National Arboretum and U.S. Botanic Garden](#)

Saturday, December 13, 12:30 p.m. to 5 p.m.



Winter is a marvelous time of year at the National Arboretum, which is bright with evergreens and berries, and the Botanic Garden conservatory on the mall, where poinsettias and other seasonal plants make a festive display. This afternoon tour includes an extensive bus tour around the arboretum, with short walks to view hollies, dwarf conifers, the Japanese bonsai and Chinese penjing collections, and plants with winter fruits and flowers. A stop is also made at the U.S. Botanic Garden for its spectacular holiday exhibition. The tour is led by Marion Lobstein, an assistant professor of biology at Northern Virginia Community College.

[+ BUY TICKETS](#)

In order to purchase tickets online, you will need to login to our website. Only current Young Benefactors members are able to purchase tickets at the member rate for both Young Benefactors and Resident Associate programs/ events.

If you have not yet used your Temporary Login, which is linked to your Smithsonian account, please use the information that appears below:

%%\$temp_login%%

%%\$temp_password%%

Please share your thoughts and/or questions. The YB Committees value your input and welcome all volunteers. Contact information and Committee descriptions are available at <http://youngbenefactors.org/ticketing/contact.aspx>.

For more information on the Young Benefactors of the Smithsonian Institution, visit www.YoungBenefactors.org.

For more information on the Smithsonian Resident Associate Program, visit www.ResidentAssociates.org.

You have received this email because you subscribed to the service or submitted your name and e-mail address to be added to the distribution list for the young professional membership group of the Smithsonian Institution. To unsubscribe, please send a reply e-mail to CustomerService@YoungBenefactors.org with "Unsubscribe to YB" in the subject line.